

Software Boxes



SOFTWARE BOXES

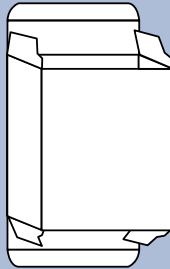
Standard Features:

- Available in three box styles (Double tuck, interlock and tab lock) and one sleeve style.
- 20 pt. C-1-S.
- Gloss film lamination one side.
- Litho printing, featuring Affordable 4 color process.

Optional Features:

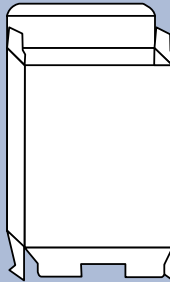
- Aqueous coating.
- Varnish coating.
- Matte film lamination.
- Foam or corrugated inserts.
- Foil stamping and embossing.
- Fulfillment services.

900 STYLE BOX



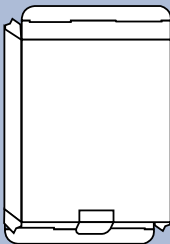
Item #	Dimensions	Capacity	Description
900-01	9 1/2" x 8"	2 1/4"	Standard double tuck box.
900-02	9 1/4" x 7 1/2"	1 5/8"	Ships flat.
900-03	9 3/4" x 7 7/8"	1 7/8"	
900-04	9 1/2" x 7 7/8"	2"	
900-05	10 1/4" x 8 1/4"	2 1/8"	
900-06	10" x 9 1/8"	2 1/4"	
900-07	5 1/2" x 5 1/2"	1 1/2"	
900-08	6 5/8" x 3 3/16"	2 1/8"	
900-09	9 x 5 7/8"	2 3/8"	
900-10	9 1/4" x 7 1/2"	1 5/8"	
900-11	9 3/16" x 7 1/2"	1 1/4"	
900-12	9 3/8" x 7 7/8"	1 5/8"	
900-13	9 3/8" x 8 1/8"	2"	
900-14	9 1/2" x 7 1/2"	3/4"	
900-18	10 5/16" x 8 1/4"	2 1/8"	
900-19	11" x 8 7/8"	1 3/8"	
900-20	11 3/64" x 8 7/8"	1 7/8"	

930 STYLE BOX



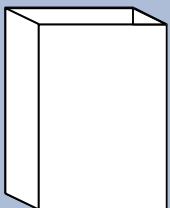
930-01	10" x 9 1/8"	2 1/4"	Single tuck top with interlocking bottom. Ships flat.
930-02	9 1/4" x 7 1/2"	1 5/8"	
930-03	9 1/4" x 7 7/16"	2 7/8"	
930-04	9 1/2" x 7 3/4"	1 1/2"	
930-05	10 1/8" x 8 1/4"	4 3/4"	
930-06	12" x 9 1/2"	3"	

940 STYLE BOX



940-01	9 1/2" x 7 5/8"	1"	Double tuck box with locking tabs for extra security.
940-02	10 1/2" x 5 1/2"	2 1/2"	Ships flat.

910 STYLE SLEEVE



910-01	10 1/4" x 8 1/16"	1 1/2"	Sleeve, open top and bottom.
910-02	10 1/4" x 8"	2"	Ships flat.