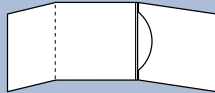


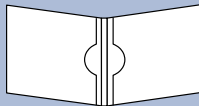


959 STYLE



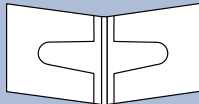
Item #	Dimensions	Description
959	5 1/4" x 5 1/4"	Three panel mailer with perforated reply card. Holds one CD. Ships flat with flap open.

960 STYLE



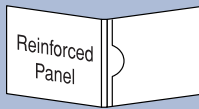
960	5" x 5"	Sleeve mailer. Holds two CD's. Ships flat.
-----	---------	--

961 STYLE



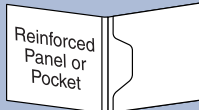
961	5" x 5"	Sleeve mailer. Holds two CD's. Ships flat.
-----	---------	--

962 STYLE



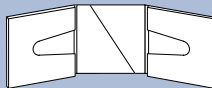
962	5" x 5"	Sleeve mailer. Holds one CD. Ships flat.
-----	---------	--

963 STYLE



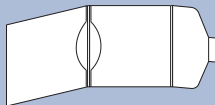
963	5" x 5"	Sleeve mailer. Holds one CD with optional literature pocket or display panel. Ships flat.
-----	---------	---

964 STYLE



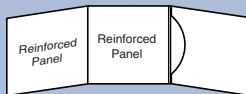
964	4 7/8" x 4 7/8"	Three panel mailer holds two CD's with literature pocket in center.
-----	-----------------	---

966 STYLE



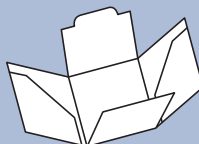
966	5 1/16" x 5 1/16"	Sleeve mailer holds two CD's with wrap around tuck flap. Ships flat.
-----	-------------------	--

968 STYLE



968	5 1/8" x 5 1/8"	Three panel mailer to hold one CD. Two full reinforced display panels. Ships flat.
-----	-----------------	--

970 STYLE



970	5 1/16" x 5 1/8"	Five panel mailer. Two glued pockets with fold over tab lock flap. Ships flat.
-----	------------------	--