

# Tote Boxes



## FILM LAMINATED LITERATURE BOXES

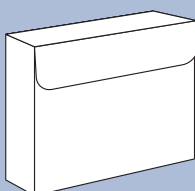
### Standard Features:

- Three styles (fixed capacity, expansion and tab lock).
- 20 pt. C-1-S.
- Gloss film lamination one side.
- Litho printing, featuring Affordable 4 color process.

### Optional Features:

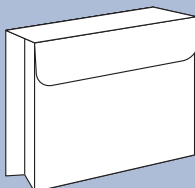
- Aqueous coating.
- Varnish coating.
- Matte film lamination.
- Velcro or elastic band closures.
- Foil stamping and/or embossing.
- Can be constructed from any heavy weight paper you specify.
- Corrugated inserts.
- Fulfillment services.

### 400 STYLE



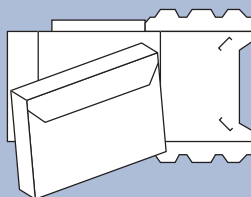
Item #	Dimensions	Capacity	Flap Size	Description
400-00	11 3/4" x 10"	5/8"	3 3/4"	Fixed capacity box. Ships assembled. Includes one set of velcro dots.
400-01	11 3/4" x 10"	1"	3 3/4"	
400-02	11 3/4" x 10"	1 1/2"	3 3/4"	
400-03	11 3/4" x 10"	2"	3 3/4"	
400-04	12 1/4" x 10"	1 3/4"	4"	
400-05	13" x 10 3/4"	1 1/2"	3 3/4"	
400-06	14 1/2" x 9"	3/4"	3 1/2"	
400-07	8 3/4" x 11 1/4" (vertical format)	1/2"	2 1/2"	

### 402 STYLE



402-00	11 3/4" x 9 5/8"	1 1/4"	3 3/4"	Expansion box. Ships assembled. Includes one velcro strip or elastic band closure.
402-01	11 3/4" x 9 5/8"	1 1/2"	3 3/4"	
402-02	11 3/4" x 9 5/8"	2"	3 3/4"	
402-03	11 7/8" x 9 5/8"	3"	2 7/8"	
402-04	12 1/2" x 9 1/2"	1"	3 1/2"	
402-05	12 1/2" x 9 1/2"	2"	3 1/2"	
402-06	13" x 10"	2 3/4"	4 3/4"	

### 467 STYLE



467-01	11 5/8" x 9"	1 1/4"	3"	Tab lock box. Ships flat for you to assemble using lock-in tabs.
467-02	11 5/8" x 9"	2 1/2"	3"	
467-03	11 1/2" x 9"	1 1/4"	6"	
467-04	14 1/4" x 9 3/4"	2"	6"	
467-05	9 3/8" x 11 3/8"	1 1/4"	3"	